

QUICK CARD

Fiber Inspection with the T-BERD 5800

This Quick Card outlines how to use the P5000i Fiber Inspection Microscope to inspect common single mode fiber end faces.

EQUIPMENT REQUIREMENTS

- ▶ T-BERD 5800 Platform
- ▶ P5000i Fiber Microscope
- ▶ Bulkhead and Patch Cord Inspection Tips matching the fiber under test
- ▶ Fiber optic cleaning tools



Figure 1: Equipment Requirements

CONNECT P5000i TO T-BERD

1. Attach appropriate Inspection Tip to the front of the P5000i by threading the collar of the tip onto the probe:
 - ▶ Standard Patchcord tips and Bulkhead tips connect to the **Barrel Assembly** (FBPT-BAP1) by loosening and tightening the Retaining Nut on the Barrel Assembly.
 - ▶ Ribbon tips and the Corning OptiTap Bulkhead tip (FBPT-COD-L) **connect directly** to the probe.
2. Insert the P5000i **USB Connector** into a **USB Port** on the side of the T-BERD



Figure 2: P5000i, Barrel Assembly and Tips



P5000i Microscope

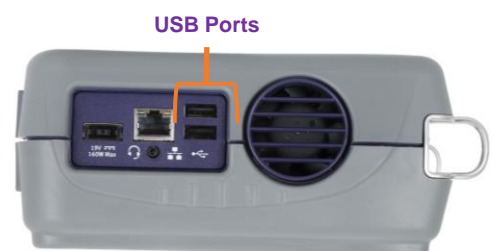





Figure 3: P5000i and T-BERD 5800

<https://www.viavisolutions.com/en-us/products/fiber-inspection-cleaning>

QUICK CARD

SET UP THE P5000i

1. Press the Power Button  to turn on the T-BERD and display the **Startup Screen**.
2. Tap the **Microscope** icon in the Status Bar at the top of the screen.  **Microscope**
3. Tap the **Setup** soft key .

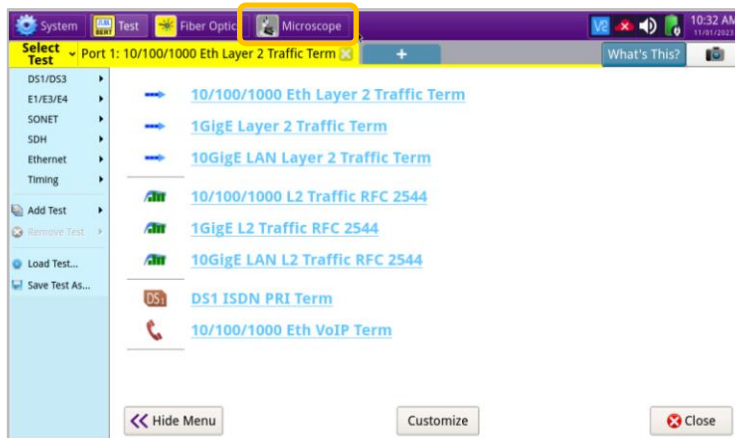


Figure 4: Startup Screen

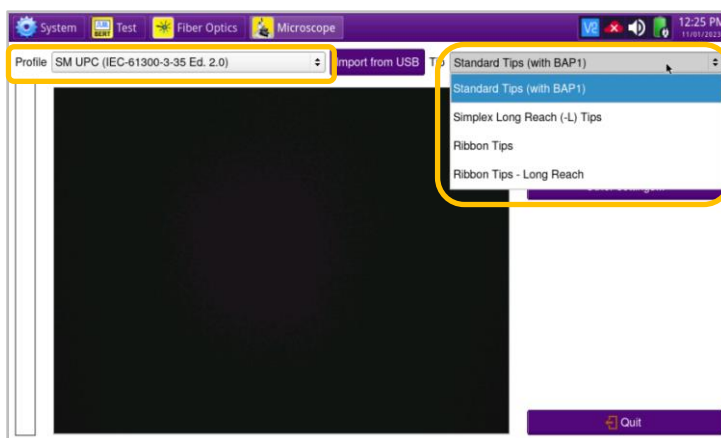











Figure 5: Microscope Setup

4. Using the drop-down menus at the top of the screen, configure **Tip Setting** and **Profile** per the table below. If the Tip Selection is not shown, connect the P5000i to a PC or laptop and move the appropriate tip setting onto the P5000i with FiberChekPRO™ software. For more information, consult the FiberChekPRO user manual. To download FiberChekPRO to your PC, visit <http://fcpro.updatemyunit.net/>.

Connection Type		Tip	Profile Selection	Tip Selection
LC	Bulkhead		SM UPC (IEC-61300-3-35 Ed. 2.0)	Standard Tips (with BAP1)
	Patch Cord		SM UPC (IEC-61300-3-35 Ed. 2.0)	Standard Tips (with BAP1)
SC-UPC	Bulkhead		SM UPC (IEC-61300-3-35 Ed. 2.0)	Standard Tips (with BAP1)
	Patch Cord		SM UPC (IEC-61300-3-35 Ed. 2.0)	Standard Tips (with BAP1)
SC-APC	Bulkhead		SM APC (IEC-61300-3-35 Ed. 2.0)	Standard Tips (with BAP1)
	Patch Cord		SM APC (IEC-61300-3-35 Ed. 2.0)	Standard Tips (with BAP1)
Corning OptiTap	Bulkhead		SM APC (IEC-61300-3-35 Ed. 2.0)	FBPT-COD-L
	Patch Cord		SM APC (IEC-61300-3-35 Ed. 2.0)	Standard Tips (with BAP1)
Corning OptiTip	Bulkhead		Ribbon, SM APC (IEC-61300-3-35 Ed. 2.0)	Ribbon Tips
	Patch Cord		Ribbon, SM APC (IEC-61300-3-35 Ed. 2.0)	Ribbon Tips

QUICK CARD

INSPECT THE BULKHEAD


1. Set up the P5000i as described on page 2.
2. Press the **Back** soft key  to return to the inspection screen.
3. Insert the **Bulkhead inspection** tip into the Bulkhead.
 - ▶ For SC-APC Bulkheads, align the keys on the inspection tip and the bulkhead connector.
 - ▶ For OptiTap Bulkheads, align the arc and flat pin in the inspection tip to the matching insertions inside the OptiTap receptacle adapter.
 - ▶ For OptiTip Patch Cord Inspection, slide the patch cord adapter onto the main tip assembly. Rotate wheel to view and test each fiber.
4. Adjust the **Focus Control** wheel of the P5000i microscope to focus the optical fiber. The top vertical bar on the screen indicates the level of focus adjustment. The higher the level, the better the focus. The screen will display a line in the focus bar where the optimal focus lies for that image. Focus the image until the bar is as close to the line as possible.
5. There are 2 ways to run the inspection test:
 - ▶ Press the **Test** button on the P5000i.
 - ▶ Tap the **Test** soft key on the T-BERD.
6. A green **PASS** indicates a **PASS** result.
A red **FAIL** indicates a **FAIL** result.
7. Tap the **Live** soft key on the T-BERD to return to the Live fiber view.
8. If the test failed, clean the fiber end-face and re-run the inspection test. Repeat until it passes.



Figure 6: LC Bulkhead



Figure 7: SC APC Bulkhead



Figure 8: OptiTap Bulkhead



Figure 9: OptiTip Bulkhead

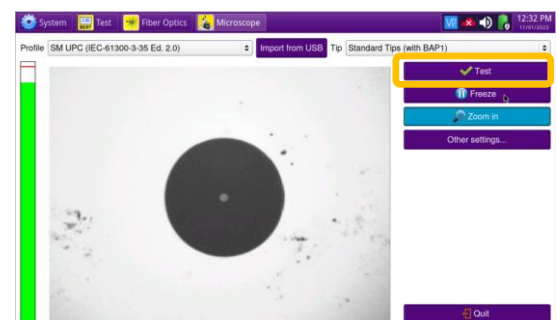


Figure 10: Live Inspection

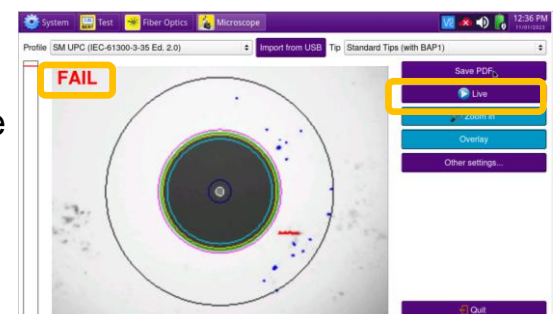


Figure 11: Pass/Fail Analysis

QUICK CARD

INSPECT THE PATCH CORD

1. Insert the Patch Cord into the Inspection tip:

- For **SC-APC Patch Cord** inspection through an SC-SC Optical Coupler, insert the Patch Cord into the SC APC optical coupler. The Patch Cord, coupler, and tip are all keyed and the keys must be aligned.
- For **OptiTap** and **SC-APC Patch Cord** Inspection without an Optical Coupler, insert the Patch Cord into the 2.5mm APC Patch Cord inspection tip. Rotate fiber and align the connector key to the notch on inspection tip for proper alignment.
- For **OptiTip Patch Cord** Inspection, slide the bulkhead adapter onto the main tip assembly. Rotate wheel to view and test each fiber.



Figure 12:
SC APC Patch Cord and Coupler



Figure 13: SC APC Patch Cord



Figure 14: OptiTip Patch Cord



Figure 15: OptiTip Patch Cord

2. Set up the P5000i as described on page 2.

3. Press the **Back** soft key to return to the inspection screen.

4. Adjust the **Focus Control** wheel of the P5000i microscope to focus the optical fiber.

5. There are 2 ways to run the inspection test:

- ▶ Press the **Test** button on the P5000i.
- ▶ Tap the **Test** soft key on the T-BERD.

6. A green **PASS** indicates a **PASS** result. A red **FAIL** indicates a **FAIL** result.

7. Tap the **Live** soft key on the T-BERD to return to the Live fiber view.

8. If the test failed, clean the fiber end-face and re-run the inspection test. Repeat until it passes.

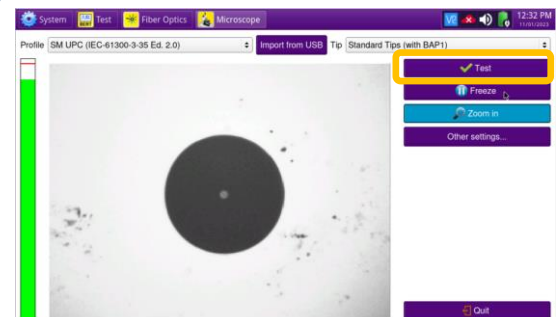


Figure 16: Live Inspection

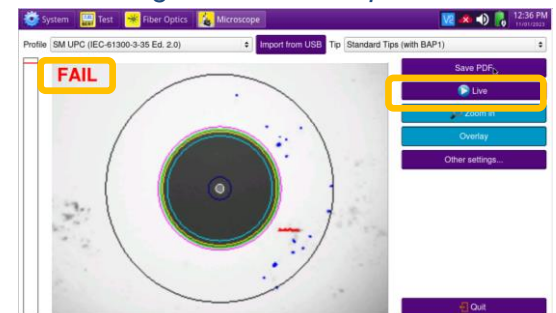


Figure 17: Pass/Fail Analysis



Contact Us

+1 844 GO VIAVI
(+1 844 468-4284)

To reach the VIAVI office nearest you,
visit viavisolutions.com/contact